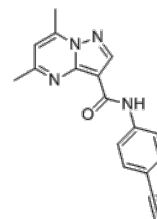


**Product Name** : ML198  
**Cat. No.** : PC-38525  
**CAS No.** : 1380716-06-2  
**Molecular Formula** : C<sub>17</sub>H<sub>14</sub>N<sub>4</sub>O  
**Molecular Weight** : 290.326  
**Target** : Other Targets  
**Solubility** : 10 mM in DMSO



### Biological Activity

ML198 is a non-inhibitory chaperone of glucocerebrosidase (**GCase**) enzyme, does not inhibit the enzyme's action, but can facilitate its translocation to the lysosome.

### References

Steven Rogers, et al. Bethesda (MD): National Center for Biotechnology Information (US); 2010-. 2012 Mar 27 [updated 2013 Mar 7].

**Caution: Product has not been fully validated for medical applications. Lab Use Only!**

E-mail: tech@probechem.com